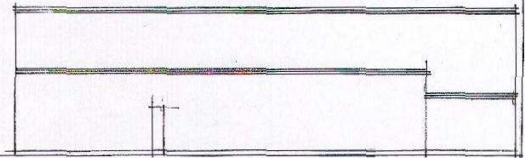
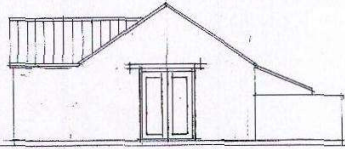


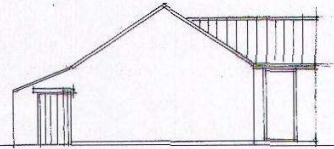
FRONT ELEVATION -> SOUTH EAST



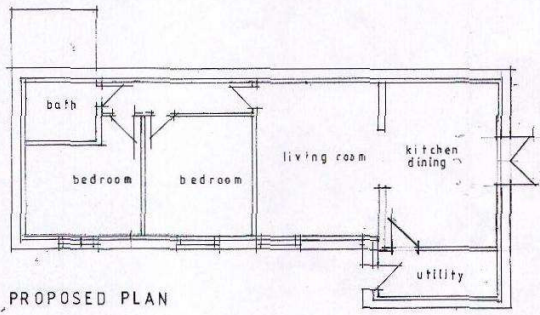
REAR ELEVATION -> NORTH WEST



SIDE ELEVATION -> NORTH EAST



SIDE ELEVATION -> SOUTH WEST



PROPOSED PLAN

THIS COPY HAS BEEN MADE BY OR WITH THE
AUTHORITY OF THE DISTRICT COUNCIL
ALTHOUGH NO REPRESENTATION IS MADE AS TO THE
CORRECTNESS OF THE INFORMATION CONTAINED
HEREIN NOR IS ANY LIABILITY ACCEPTED FOR
LOSS OR DAMAGE OF ANY KIND WHICH MAY BE
SUFFERED BY ANY PERSON AS A RESULT OF
RELYING ON THE INFORMATION CONTAINED
HEREIN WITHOUT CHECKING THE FACTS
YOURSELF.

RYEDALE DM

- 1 DEC 2014

DEVELOPMENT
MANAGEMENT
14/01327/HOUSE

HEDRA
THE SCHOOL HOUSE INN,
LOW MARISHES, MALTON,
SCALE 1:100

EXISTING PLAN AND ELEVATIONS

DRG NO. MSR. 6